

It's **Spring** with **lots of local events** to look forward to and enjoy . . .

. . . starting with our **third AGM** at 8pm on **Tuesday 22 April** in the beautiful setting of **S Michael's and All Angels**, Victoria Road. Please bring CMPCane^{ws} 11 with you for the Management Committee's report, nominations for officers and the committee, and Financial Report on pages 16–17. This will be followed at 8.30pm by our **2008 CMP Festival launch** with writer, critic and former Brighton Festival Literary Programme Director, **Peter Guttridge**, coordinator for our Crime and Brighton weekend. Meet other performers, enjoy some refreshments, collect your Festival brochure and make advance bookings at preferential rates!

There's lots happening over the May Bank Holiday weekend: from the Globe Theatre bringing *Romeo and Juliet* to the Dyke Road Rest Garden as part of the Brighton Festival to **St Ann's Well Gardens** celebrating 100 years as a free public park on **Saturday 24 May** (see p.4), and on **Sunday 25 May**, **Powis Square Community Association** are combining their annual bric-a-brac and book sale (2pm) with a barbecue (12.30pm) in **Powis Square**. Non-residents are welcome to bring their own picnic, hunt for something interesting and meet their neighbours.



BOB YOUNG

SNCGSA's Lizzie Deane reports: I don't normally associate February with Spring, but now I know otherwise! It's not just the appearance of violets in the Rest Garden that has awakened the Spring in me, but the fact that it was essential for bird nesting boxes to be up and ready for use by 16 February at the latest

CONTINUED ON PAGE 4

Clifton Montpelier Powis Festival 5–20 July For the second year running, an extended community festival, centred on Saint Michael's and St Nicholas' with events celebrating our area's musical and literary links and heritage including a child-focused weekend (5/6 July) and the Beacon's Garden Gadabout! Brochure available at Festival Launch at 22 April AGM, To find out more and get involved – lots of help needed – t 07816 403099 or e info@cmpca.org.uk
Once again don't forget to pull out and keep our special four-page supplement for Brighton Festival Fringe Events in May in our area including the Seven Dials Art Trail.

>>> Future meetings . . .

Meetings held on third Tuesday of the month at St Mary Magdalen's Community Centre Upper North St at 8pm preceded by Police Surgery at 7.30pm. Please note no meeting planned for May.

- **Tuesday 18 March** Transition Town – Brighton & Hove a carbon-neutral city? with Chris Callard.

- **Tuesday 22 April** 3rd AGM at S Michael's,

Victoria Road, and launch of 2nd CMP Festival with writer and critic, Peter Guttridge

- **Tuesday 17 June** The work of The Sussex Beacon and International HIV/AIDS Alliance: living with HIV/AIDS locally and internationally

Who are we?

The Clifton Montpelier and Powis Community Alliance is a community association for the Montpelier and Clifton Hill Conservation Area. All residents can call themselves members and membership is free (for more information and streets included, see page 19).

Felce & Guy Partnership LLP
Architects

Experienced local architects providing a full range of services for all types of projects.

For more information, please contact us.



T: 01273 736217
F: 01273 720979
E: info@felceandguy.co.uk
W: www.felceandguy.co.uk

73 Holland Road | Hove | BN3 1LB

jane mills
creative gardening



telephone
01273 832 375

revitalise your garden with creative planting or simple maintenance

or have a planting plan designed for you to follow for your own perfect results

planting plans from as little as £40



Parker Bathrooms

- Design service
- Fitting arranged
- Fully qualified
- Latest equipment
- Bathroom lighting
- Classical to contemporary
- Friendly and helpful staff
- Wet room, steam room or shower
- We sell tiles as well
- Free delivery

66-80 Dyke Road t 329829

ESTIA

BRIGHTON'S FAVOURITE GREEK-CYPRIOI RESTAURANT. ITS A FAMILY RUN BUSINESS AND PROVIDES BEST QUALITY SEASONAL INGREDIENTS. ALL MEAT IS ADDITIVE FREE, & MOSTLY ORGANIC.

FIND US AT
3 HAMPTON PLACE,
BRIGHTON

01273 777399

AGNEWS

TAILORS SINCE 1906

• TAILORS • ALTERATIONS •

THE
GENTLEMEN'S
TAILOR
ONE HUNDRED
YEARS OF SERVICE

BOW TIES • TIES • WAISTCOATS

01273 739441

17 Spring Street, Brighton BN1 3EF

TINGLEY'S

ESTATE AGENTS

WWW.TINGLEYS.CO.UK

724584

SALES & LETTINGS

81 DYKE RD

*Always Honest & Realistic.
Totally Professional.
With A Friendly Approach*

Gadabout coordinator Andrew Doig writes 'The Clifton Powis Montpelier garden trail proved a great success last July. We had glorious weather which brought large numbers of visitors to the six gardens open in the area. Those who offered tea and cakes were run off their feet with custom. On just one day, more than £1,000 was raised for the Sussex Beacon by the local community. This year more than 40 gardens will open across the City on Sundays 13 and 20 July. We are hoping that other garden owners will now join the CMP trail and help make it the finest garden trail in the City!' **Contact Andrew on 01273 692770 or via www.gardengadabout.org.uk**

In our second 'Gadabouter' article, Louise Schweitzer recalls her garden opening experience

When Reicke and I lived near Herstmonceux, we opened our country garden for charity. We were inspected by dragons from the National Gardens Scheme Yellow Book brigade and cautioned on account of our pond (slippery, dangerous) stone flagged terrace (cracked) car parking (field full of cows) and weedy borders. The experience was a challenge and I enjoyed bringing our formal walled garden and more 'natural' orchard up to scratch, but I did not enjoy the rapacious demands for teas, scones and non-allergenic substances to eat and drink for £1.50 a throw . . .

So when we were approached for the Beacon's Garden Gadabout as part of the CMP Festival last July, we were wary: but we were wrong! Andrew Doig seemed enthusiastic about the smallish town garden which lay behind our Sillwood Road terraced house and never appeared to notice the weedy columbine which rampaged over the trellis, nor the washing line pinned to the fig tree. He took marvellous photographs and won our hearts completely by appreciating our large, spoilt, peaceful dog. The



two designated Sunday Open afternoons were blessed with hot, glorious sunshine so we pinned up Welcome notices on the front gate and waited. Over 80 visitors made their way to No. 40 on the first afternoon and we enjoyed every one of them. Most were unknown to us and were making an organised tour: we heard about other open gardens and indeed something of their own horticultural achievements. We learnt useful tips – I am grateful for many suggestions, concerning planting, painting outside walls, preserving garden furniture and pruning fruit trees. Nobody overstayed their welcome, only a very few took advantage of the (vast) supplies of tea, cake, and orange squash and most made generous contributions to the collecting tin. A few friends and neighbours popped by in support and

Royal Pavilion Garden News

Friday 11 April don't miss the seeds and plants on offer, organised by the Garden Volunteers.

Saturday 24 May is the start of Garden Week at the Royal Pavilion with talks by guest speakers and walks including a Chinese Walk linked to the Pavilion's Chinoiserie Exhibition.

were introduced to both the Festival and the Garden Gadabout scheme. It was a very sociable exercise and one that combined supporting charity with raising a community profile, something we believe and support most particularly.

It must be admitted that neither of us are particularly knowledgeable about gardening and regard our precious outside space as an extra room. Expert friends helped with garden design and layout, and even if we are not quite as bad as knowing just roses, daisies and those pink things over there, we are not far off. But we've been lucky with the results and it is rewarding to find that friends, neighbours and visitors enjoy them almost as much as we do. Perhaps in a town, the luxury of a green lawn, abundant, flowering clematis and shady, quiet corners under a leafy pergola are particularly welcome. It was lovely to feel that, even if only once a year, we could share it with complete strangers. The ultimate question is, would we do it again, and the answer is a very definite yes!

Finishing Touch



**Independent
Dry Cleaners**

**3 Powis Road
Brighton
BN3 1HJ
01273 885550**

St Nicholas Church Green Spaces Association **update**

The BBC supplied SNCGSA with wooden nesting boxes as part of the ongoing Breathing Spaces initiative,



some sponsored by Austin Gray estate agents. Jess Green arranged for local children and young people to put them together at the St Nicholas youth club. Helped by Park Ranger Robin Hanson, five bird

boxes were assembled in all, and you can spot them as you walk through St Nicholas Churchyard, play area and Rest Garden. As a finishing touch, the children wrote their names at the base of their boxes, so they can follow the progress of the young families they have made homes for'.

4

Bob Young continues: 'Meanwhile work has begun, under SNCGSA auspices, in the Rest Garden. A group of staff from American Express led by Simon Bannister from the Council's Environment Improvement Team spent a day pruning undergrowth, sanding down and re-varnishing benches, and carrying out monument identification work (more of which happened with **Mapping the Past** on 8 March).



BOB YOUNG

In December a group of probationers worked for several days with Henry Christie from the Council, reducing the heights of hedges to manageable proportions and clearing ivy which had clogged and covered tombstones and walls. Further major clearing was done by Cityparks. One of the most striking results of all this work is the unmasking of the 14 burial vaults, designed by Amon Henry Wilds, along the north boundary of the Garden'.

And Jess Green concludes: 'Over the spring, summer and autumn the gardening group will be planting new beds in the rest gardens. Any help with preparation work (ie digging!) would be much appreciated. If you prefer less strenuous work, there are plenty of smaller jobs to take on. Behind the children's playground we have started to clear an area where we hope to develop a small FOREST GARDEN as an educational space for children at local schools. If you have any time to help with this or other planting schemes and would like to join, new members would be most welcome! If you have any unwanted gardening tools we would also be happy to collect them from you.

Please contact Jess Green: 730160 or jessygreen@ntlworld.com

St Ann's Well Gardens centenary celebrations on Saturday 24 May are being organised by the newly established 'Friends of St Ann's Well Gardens', featuring activities in different areas of the park including a historical trail, music, wellbeing area, a performance by local schoolchildren of the Legend of St Ann's Well Gardens, children's activities with a Victorian theme organised by Hove Museum staff and showings of old and recent films of the park.

The park is probably most famous for its 'Chalybeate' (iron bearing) spring, later known as St Ann's Well. The Chalybeate spring is also the starting point of a ley line that continues over the Downs and beyond. In the 18th Century, St Ann's Well was a fashionable spa with pump rooms. After a period of decline, the surrounding park and gardens were created by Sir Isaac Goldsmid, and were eventually leased to George Albert Smith in the late 19th Century, who ran them commercially, offering activities including hot air ballooning and parachute jumps, a monkey house, a fortune teller and a hermit living in a cave. In 1908, the local authorities finally purchased the gardens for £10,000 and they were opened to the public on Empire Day (24 May) in 1908.

Watch out for further publicity in the run-up to the event.

Communal bins: residents were required to return their consultation documents to the Council by 25 February and the results were expected to be collated and sent to Environment Committee by 20 March.



Introducing PCSO Bobbi King

If you have any problems or queries, email roberta.king@sussex.pnn.police.uk or Regency.Team@sussex.pnn.police.uk. As always, if it is an emergency, dial 999.

Useful numbers

MP for Brighton Pavilion

David Lepper

Advice sessions

1st Friday of the month, 5.30–7pm
Briethelm Church and Community Centre
(North Rd)

● Councillors

Sven Rufus sven.rufus@brighton-hove.gov.uk
Jason Kitcat jason.kitcat@brighton-hove.gov.uk

Advice sessions First Monday of the month
12.30–3.30pm St Mary Magdalen's
Community Centre.

Or write to councillors c/o King's House,
Grand Avenue, Hove BN3 2LS

● **Police surgeries** from 7.30pm before
community meetings at St Mary Magdalen's
Community Centre

regency.team@sussex.pnn.police.uk

Police non-emergency number

t 0845 6070999

● **Refuse Help Line** includes missed refuse
collection/black bin emptying, disposal of
large items, fly tipping removal

t 274674/292929

● **Help keep our streets clean and tidy**
by putting bags out as close as possible to
collection times, by refraining from flytipping
next to black bins and by contacting the
Council as soon as a problem is noticed

● Furniture recycling

Emmaus 426480

YMCA 777212

Magpie 677577

Hello, my name is PCSO Bobbi King and I'm the new PCSO for the Clifton, Montpelier, Powis area. I've been a PCSO for a little over three years now. Previously, I was a Community Street Warden for the Eastbourne Borough Council. Prior to being part of the Regency Team, I was a member of the Street Community Policing Team. The Regency Team consists of 1 Sergeant, 3 Police Constables, and at the moment, 4 other PCSOs with 'micro beats'. The Regency Team covers the area east of Western Street, Norfolk Square, Norfolk Terrace, Windlesham Road, Windlesham Gdns; west of Dyke Road, south of North Street and Castle Square; and west of the Old Steine. At the end of March, all three Neighbourhood Specialist Teams for central Brighton (Regency, North Laine & Hanover, and Kemptown & Tärner) will be going onto a shift pattern. The PCs on my team will work a three earlies, three lates and three days off pattern. This will provide cover all day, everyday, by one of the three teams. It will also provide better cover at the weekends, so you will see a lot more of us at the weekends now, on foot in and around your neighbourhoods.

My 'micro beat', of course, is the Clifton, Montpelier and Powis area. My aim is to do high visibility patrols in my micro beat whenever possible. However, certain jobs, taskings, and operations take priority. For instance, at time of writing, there are 2 operations going on. One is targeting the misuse of disability 'Blue Badge' parking permits, and the other is targeting vehicles without a current tax disk, or displaying an expired tax disk. So readers . . . check your tax disks!

A community safety reminder.

Burglars! They can get into the most unlikely places, given the slightest opportunity! So a few tips:

- Keep your doors locked at all times. Close and lock your windows when you are out. Even if it's just to nip around the corner for a pint of milk and a paper.
- If you have to leave a window open, arrange it so you can only open it a few inches, by using window stoppers, and moving anything within reach.
- If you can, leave a light on when you go out for the evening. If you have access to a computer, why don't you go to www.sussex.police.uk, and have a look at the web site? It's loaded with useful information: you can also use the links to view the Regency Team (currently missing my picture, since I am new to the team!).



**Barry at the
Tureen**
31 UPPER NORTH STREET
BRIGHTON 328939

2 Course £20.00

3 Course £23.50

Housewine £9.00
BYO £2.50 per bottle

Wednesday - Saturday for
dinner, otherwise by
prior arrangement

FREE DELIVERY
OF YOUR
REPEAT PRESCRIPTION

Ashtons can
collect your
repeat prescription
from your doctor's
surgery and deliver it
to your home or
workplace for FREE

Fast, Reliable Delivery
7 Days a Week

ashtons
East Sussex Pharmacy

Open until 10pm EVERY DAY
98 Dyke Road, Seven Dials
www.ashtonspharmacy.com
01273 325020

The dark side of the Alex?

Michael Hales

Somewhat like the moon, the Royal Alex hospital site has a dark side: one not exposed to ordinary view, that doesn't receive the bright light of public attention because it features no conservable buildings. Unlike the moon, though, there's life on the dark side of the Alex!



THE ALEX TRIANGLE FROM HOMELEES HOUSE, WITH BLOCK G SUPERIMPOSED AND THE HOMELEES GRASSY AMENITY AREA IN THE FOREGROUND

About 300 residents in the 'Alex Triangle' (contained by Dyke Road, Clifton Road and Clifton Hill) have a common outlook on a large open space at the rear. Currently there's nothing over two storeys in height, apart from trees. But the development that Taylor-Wimpey is planning would change this dramatically. At the north and west corner of the Alex site, away from the public gaze of the Dyke Road frontage, the developers propose to build a five-storey block ('Block G') – the same height as the existing trees – at the highest point in the very centre of the Alex Triangle. This will completely change the aspect, the feel and the texture of this large area of space within the conservation area.

About 100 of the residents in the Triangle live in Homelees House, the retirement flats on the corner of Dyke Road and Clifton Road, where 25 years ago the Congregational church used to be. I'm one of these residents.

Our attention first came to the dark

side of the development because its northern boundary is right next to the small and precious area where we sit out on the grassy lawn, watch the birds and foxes, and catch the summer sunlight. Because of mobility or sight difficulties, many Homelees residents can't get about easily, and this piece of pleasant open space is a valuable amenity: we have tables and chairs out there. Last December we began to realise that Block G would be a high cement-rendered mass where we currently have mostly open sky, and there's a strong likelihood

it will cast full shade right across our amenity space, all year round, denying us sun to sit in. We're not happy about this, and have submitted objections to the Council's planning committee.

We've since realised that Block G will be out of keeping with the entire space within the Alex Triangle. You'll be hearing more about this from Alex Triangle residents. In the meantime, you can see some projected views of the Dark Side of the Alex by going to homepage.mac.com/michaelhales/the_alex_triangle

6

>>>>>>>>RAH Stop Press

On 5 March, the second planning application submitted by Taylor Wimpey just before Christmas was rejected by Planning Committee. The CMPCA objected to this application as it had to the first, arguing for the potential of a hybrid scheme suggested by MC member Graham Towers to retain and convert the South Eastern corner of the old building. We also objected to the height and proximity of buildings adjoining residents' homes in Homelees House, Clifton Road and Clifton Hill that Michael Hales outlines above. The inclusion of a surgery remains a key concern. The committee deferred consideration of the carpark site application.

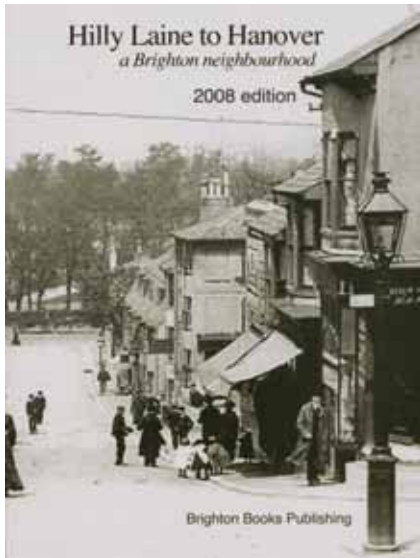
Loft conversions, extensions & refurbishments

Complete service from developing initial ideas through to completion even help with finance.

Increasing space and adding value to your home

ARCI-BUILD 01273 386775
DESIGN & CONSTRUCTION www.arci-build.co.uk

FMB
The age of building quality



Brighton Books Publishing
2008 £9.99 from City Books
23 Western Road

PAY LESS TAX

Formerly with the worlds largest accountancy firm for many years, I am now available freelance, to deal with all tax/accountancy matters, at a fraction of company rates. Ring for a free meeting.

Lawrence Flowers
01273 891505

Hilly Laine to Hanover a Brighton neighbourhood

Corinne Attwood

This fascinating book by Jacqueline Pollard and Lavender Jones covers the entire history of Hanover, from its piecemeal early development from field to village with the gradual construction of streets of workers' cottages with no bathrooms, and then the addition of grand housing for the wealthy in Hanover Crescent and Richmond Terrace; the trauma of two world wars; subsequent clearance, redevelopment and improvement projects; then the great change brought about by the arrival of young academics from the University of Sussex in the 1960s, to the gentrified present day, when Hanover houses cost about a thousand times more than a century ago. The book takes us behind the modernised facades and reveals the impoverished lives of former inhabitants. Chapters focus on different streets, shops, schools, pubs, churches, businesses, and institutions such as the almshouses and home for 'penitent females', ie unmarried mothers. The book is lavishly illustrated with maps, drawings and many black and white photographs. Much

of the book consists of the reminiscences of elderly residents, some of whom have lived in Hanover their whole lives. There are personal stories of the establishment, running and eventual demise of the many small shops which once made the neighbourhood quite self-contained, tragedies of young unmarried mothers, even ghost stories. A number of famous people were associated with the area – Aubrey Beardsley used to worship at the Church of the Annunciation when he lived in Lower Rock Gardens. Writer and poet Horace Smith lived in Hanover Crescent, where he was visited by friends including Dickens and Thackeray. The book concludes with a difference of opinion regarding contemporary Hanover, the anonymous author regretting the lack of community due to the advent of the car and the closure of most of the small shops, whereas for the author of the endpiece, 'Hanover today is one of the most distinctive parts of Brighton . . . It has a fizz, a buzz, a liveliness and a sense of community that sets it apart.'

Hair Emporium

- ✦ Aveda customised colouring
- ✦ Environmentally conscious
- ✦ Five minute scalp ritual with each treatment
- ✦ Open late until 9pm Thursday

24 Upper North Street, Brighton
t 01273 202303
www.hairemporiumltd.co.uk



S Michael & All Angels' news

BLESSING and OPENING of LIFT

A £90,000+ project to restore the north porch, create a new Parish Office (822284), and make S Michael's more accessible by means of creating ambulant steps, installing a lift (S. Michael's Place entrance), adding a ramp and improving the WCs, came to a conclusion at the end of January, when the Bishop of Chichester blessed the lift and the Mayor of Brighton and Hove declared it open. This means that those with prams and those with walking difficulties can the more easily get into S. Michael's Church and Community Hall, thus making both more fully inclusive.



SYRIAC ORTHODOX CHURCH

Also on the same day as the opening of the lift, Archbishop Athanasius, Metropolitan of the Syriac Orthodox Church in the United Kingdom, celebrated the Liturgy for his community, many of whom live in the city. The language used is Syriac, a dialect of Aramaic, as spoken by Jesus Christ. The Syriac Orthodox Church is ancient and members are drawn from Syria, Lebanon, Israel/Palestinian territories, Iraq, Iran and Eastern Turkey. The Diocese of Chichester is forging closer links with this community, a number of whose members know persecution in their country of origin. The Syriac Orthodox liturgy will be offered in S Michael's monthly.



PHOTOGRAPHIC EXHIBITION

At the time of the blessing of the lift, an exhibition of photographs of S Michael's, by local photographer, MATTHEW ANDREWS, was inaugurated in the north cloister showing wonderful details and views of S Michael's, in architecture, stained glass, woodcarving and textile. They can be seen by those visiting either church or hall, and a good time to view them is during **S Michael's Community Breakfasts, 9-11am every Saturday**, as well as during the Brighton and CMP Festivals.

8

We invite you to join us at Saint Michael's, particularly for the keeping not only of the eight days of HOLY WEEK, but especially for the GREAT THREE DAYS of MAUNDY THURSDAY, GOOD FRIDAY and EASTER EVE/DAY as we celebrate them in music and silence, in solemn liturgy and symbol, in movement and word, in stillness and colour, and in daytime and at night. You are most welcome to join us for part or all of our services, whether as believer or seeker after truth, committed or enquirer.

HOLY WEEK

PALM Sunday 16 March

8am Mass

10.30am Assemble in our Hall as Palm crosses are blessed and we begin outdoor procession marking Christ's Entry into Jerusalem, before Sung Mass with 3-voice Reading of Passion Gospel

5pm Stations of the Cross

Monday 17 March 6pm Mass

Tuesday 18 March 7.30pm

The Seder (Jewish meal) in the Hall

Wednesday 19 March 6pm Mass

MAUNDY THURSDAY 20 March

8pm Sung Mass of The Lord's Supper

GOOD FRIDAY 21 March 10.30am

Stations of the Cross for all ages

3pm SOLEMN LITURGY of THE LORD'S PASSION and DEATH

EASTER EVE 22 March 8pm Easter Vigil

EASTER SUNDAY 23 March

8am Mass of the Dawn

10.30am Procession and Festival Mass

Sunday 30 March OCTAVE of EASTER

D. R. F. SERVICES

PLUMBING & HEATING

Installation

Repairs

Service

209568

Office/fax 01273 508940

Mobile 07766 337906

D. R. F. SERVICES

BRIGHTON AND HOVE STREAMLINE

TAXIS

747474

ALEXANDER TECHNIQUE

reduce pain, manage stress,
 improve well-being
 with MARK CLAIREAUX MSc FATE

01273 687739

www.alexander-technique-brighton.com



>>> pull out and keep **Festival Fringe** supplement

Festival Music at S Michael's

Saturdays 3, 10, 12, 24, 31 May 10am
The Cathedral-of-the-backstreets

One hour guided tour of one of
England's thousand best churches. £3
Cooked breakfast 9-11am

Saturday 3 May, Sunday 4 May 7.30pm



S Michael & All Angels
Victoria Road, Brighton
JOHANN SEBASTIAN BACH'S
Sonatas & Partitas for
Unaccompanied Violin

Saturday 3 May 7.30

Sunday 4 May 7.30

BENEDICT CRUFT

returns to S Michael's for his 20th
consecutive year to perform these
six great works for violin.

£10 (£8)

Saturday 10 May 1.15pm
Bach & Elgar Violin Sonatas

Ellie Blackshaw (violin) and Raija Walker
(piano). £5

Best of Both 7.30pm

Joss Peach and Glen Capra contrast and
compare Jazz and Classical piano music,
from Bach to Boogie £8 (£6)

Wednesday 14 May 7.30pm
The Astraeus Ensemble

Dan Elson oboe; Roland McCabe
clarinet; Andy Feist horn; Jeremy Crump

bassoon and Stephen Carroll Turner
piano, play Dukas *Villanelle for horn and*
piano; Mozart *Quintet for piano and*
wind in E flat K452; Ibert *Cinq pieces en*
trio; Beethoven *Quintet for Piano and*
wind in E flat Op 16. £8 (£6)

Friday 16 May 7.30pm
Cathedral Brass

Hangleton Brass Band conducted by
Matthew Pollard, with Philip Adams
(organ). This established and successful
local brass band performs music
designed to suit the spectacular
acoustics of S Michael's, with works by
composers including Prokofiev, Downie,
Wagner and the *Finale* from Saint-Saens'
Organ Symphony £6 (£4)

Saturday 17 May 1.15pm

With Women in Mind

Piano recital by **Ambrose Page**
comprising music that focuses on the
fairer sex, with works that have been
written by, for, and with women in
mind. The concert includes music by



Beethoven, Cecile
Chaminade,
Rossini, Clara
Schumann,
and Amy
Woodforde-
Finden £5.

Saturday 17 May 7.30pm
The British Bassoon

The Glens perform music from Hurlstone
to Finnissy including world premieres of
several commissioned works £6 (£4)

Wednesday 21 May 7.30pm
Fantasies

Bulgarian born pianist Deltcho Deltchev
plays Bach's *Chromatic Fantasy in D*
Minor; Mozart's *Fantasy in C Minor*;
Schumann's *Fantasy in C Major Op 17*;
Scriabin's *Fantasy Op28* £8 (£6)

Thursday 22 May 7.30pm
Music For Small Ensembles

The Tacet Ensemble present bright and
varied programme of music by living
composers including Graham Fitkin,
Michael Torke, John Alexander, Martin
Butler and world premiere by Nikki Cassidy
£6 (£4)

Saturday 24 May 1.15pm
Pictures at an Exhibition

Raija Walker, piano, plays music by
Mussorgsky £5

Pre concert talk 6.45pm
Centenary Recital 7.30pm

Robert Munns (International Organist and
BBC Recitalist) and Sally Johnson
(Soprano) with Olivier Messiaen
(1908-1992): *Apparition de l'Eglise*
eternelle, *Le Banquet Celeste*, Movements
from *La Nativite du Seigneur O Sacrum*
Convivium, *Transports de Joie*; Gorecki
(b1933) *O Domina Nostra* £10 (£8)

Sunday 25 May 7.30pm
Piano Sonatas of Sydney Vale

Michael Finnissy £8 (£6)

For further details of Music at Saint
Michael's contact Director of Music
Philip Adams 01903 813743 or
adamsphilip@mac.com

Tickets: Dome Box office 01273 709709 www.brightonfestivalfringe.org.uk or on the door on the day. Disabled access at St Michael's Place entrance.

One of Brighton's top restaurants
right on your doorstep

seven dials

- Lunch menu from £10, A La Carte main courses from £10
- The Vault Private Room for up to 20 people
- Large summer Terrace opening soon
- To see all our menus and to book on line go to
www.sevendialsrestaurant.co.uk

01273 885555 www.sevendialsrestaurant.co.uk

Right on the round-a-bout: 1 Buckingham Place, Seven Dials, Brighton



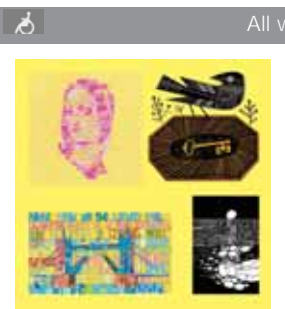


SEVEN DIALS ARTISTS

Welcome to the Seven Dials Artists Open House trail: 18 venues full of intriguing, exciting and beautiful art. All within easy walking distance of the CMPCA. From right next to Brighton station over to Hove, through Seven Dials with its great mix of shops, cafés, restaurants and bars. The Seven Dials Artists trail shows fine quality artwork from a full spectrum of art forms (and provides the occasional tea and cake stop along the way!) all shown in domestic, friendly and informal settings, with the artists on hand to welcome visitors and discuss their work.

Please note that opening times may vary. Symbols: **1st** First time opening

🌿 Garden open ☕ Refreshments 🎵 Music ♿ Disabled access 🚗 Easy parking



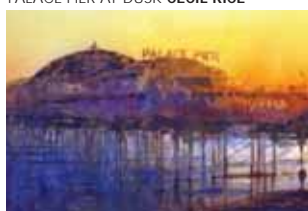
All weekends in May 12–5pm

1st ☕

May Sundays 4/11/18/25 12–5pm

☕ May 3/4 10/11

PALACE PIER AT DUSK **CECIL RICE**



Cecil Rice
From Brighton
to India

**14 Granville Road
Hove BN3 1TG**

01273 206898
rice942000@yahoo.co.uk
www.cecilrice.com

Cecil celebrates his ninth open house with a fabulous collection of dazzling watercolours and oils featuring India, Italy and Brighton. Jewel-like paintings of Rajasthan and the legendary Taj Mahal. Sparkling impressions of sunlit Venetian waterways and Tuscan landscapes. Vibrant piers, crisp regency squares, and the rolling Sussex Downs.



THEOLOGICAL LANDSCAPE
VINCENZO DONLINI

Vincenzo Donlini

**17 Buckingham Close
Bath Street, Brighton
BN1 3TW**

07738 981805
donlinvin@aol.com
www.vincenzo-donlini.co.uk

A rare chance to see paintings and prints of dysfunctional saints, heroic landscapes, mysterious cityscapes, iconic portraits and probing self portraits. From the brush of this truly visionary artist.



POPPIES **KIM LANE**

☕ ☕ ☕ May 3/4 10/11 17/18 24/25 11–5pm

☕ ☕

May 5/6 12/13 19/20 26/27 11–6pm

1st 🎵



KALEIDOSCOPE **BEN ALLEN**

Ben Allen Venue

**12 Montpelier Crescent
Brighton BN1 3JF**

01273 328597
info@benallenart.com

Ben Allen is a self-taught artist. His paintings and prints are in private collections throughout the UK, Australia, New York, Barcelona and Japan. His work has featured in the *Observer*, *Elle Déco* and *GQ* magazines.



WASP AND LEMON PIE **KIM GLASS**

GlassHouse

**3 Silverdale road
Brighton BN3 6FE**

01273 746209
kim.glass@btinternet.com
www.kimglass.co.uk
www.fernandezdesign.co.uk

Celebrate Spring, sunshine or showers! View the beautiful new work . . . enjoy a pot of tea in the garden . . . or a nice hot coffee by a cosy fire!



STICK **HELEN McDONALD**

☕ ☕ ☕ May 3/4 10/11 17/18 24/25 11–6pm

☕

May 3/4 10/11 17/18 24/25/26 11am–5pm

☕ ☕ ☕

May 3/4



WINTER PALACE **KATHRYN MILLER**

A Sense of Place

**64 Lyndhurst Road
Hove BN3 6FB**

01273 386027
colin.miller@macdream.net
www.colinmillerphotos.co.uk

Places real and imagined, the macro and the micro, explored in figurative and abstract painting and photography, with crafts to browse.

Sandy Brown: Hats
Amy Smith: Sculpture & Ceramics



BIRDS DETAIL **BING WALLIS**

**Bing Wallis and
Cecile Mabondo**

**Haltside, 102 Lyndhurst Road
Brighton BN3 6FD**

01273 778950
bingwallis@googlemail.com
www.bingwallis.com

Designer Katharine Westcott of Bing Wallis, exhibits her collection of exquisite handpainted wallpapers. Cecile Mabondo invites you to come and enjoy her colourful handmade cushions of natural silk and cotton.



DOLLY **DOLLY SARGENT**

weekends in May 11am–6pm



May 3/4/5 10/11 16/17 24/25 11am–6pm

1st

May 3/4 10/11 17/18 24/25 11am–5pm

Square Enough

13 Granville Road
Hove BN3 1TG

01273 206961
mail@squareenough.com
www.squareenough.com

Exciting variety of original artworks, objects, multiples, prints and cards by contemporary illustrators Oliver Hydes and Joe McLaren. A fascinating mix of techniques, approaches and themes run through their work.



THE LIE OF THE LAND
TERRI BELL-HALLIWELL

Artists Live Here

15 Chanctonbury Road
Hove BN3 6EL

01273 206961
halliwell_bell_halliwell@yahoo.co.uk

Paintings, sculpture, ceramics . . . David Halliwell, Terri Bell-Halliwell, Gabriella Casemore, Sarah Fer, Judith Fisher, Claire Gregory, Ali Hastlow, Hinchee Hung, Janie Jones, Luella Martin, Jill Moore, Gordon Murdoch, Hannah Nunn, Cate Parsons, Sue Partington, Becky Reed, Pema Sanders, Steven Warriner, Jerry Webb

Kitchen Cafe – Fairtrade tea & cakes



HUNGRY EVE POLAND

Windlesham Hall

7–9 Windlesham Avenue
Brighton BN1 3AH

logolepsy@yahoo.co.uk
www.evepoland.com

Beautiful affordable limited-edition screenprints, giclee prints and original paintings in oil and acrylic by Brighton artists Eve Poland and Elizabeth O'Donnell, whose diverse work is in private collections across the country.

17/18 24/25/26 12am–7pm

1st

May 3/4 10/11 17/18 24/25 11–5pm

1st

May 3/4 10/11 17/18 24/25 11–6pm

Not Only But Also @ St Nick's

Flat 9, 45 St Nicholas Road, Brighton BN1 3LP

07884 176392
kim_lane@tiscali.co.uk
www.kimlane.co.uk

Original artworks and photography Colourful, affordable Giclee prints, cards and a variety of interesting paraphernalia.



CHOICES JANE MILLAR

11 York Villas

11 York Villas
Brighton BN13TS

01273 748677
artpolitic@btinternet.com
artpolitic.co.uk

Dinah Pitman-Rowe, Helen Hoper, Jane Millar, Jacob Norris, Kenneth Welfare, Maria Short, Matt Smith, Pam Aldridge, Tashi Thondup



Girls' School

Flat 3, 9 Denmark Terrace
Brighton BN1 3AN

01273 220100
matt@sweatandcigarettes.com

Prints, drawings, sculpture, film etc by Alex Dipple, Jason Hall and Matt Pagett.

May 4/11/18/25 12am–5pm



May 1–31 10am–11pm

1st

May 3–25 10am–8pm

Helen McDonald

Top Flat, 22 Clifton Road
Brighton BN1 3HN

07957 248440
helenmcdonald@googlemail.com
www.helenmcdonald.co.uk

Exhibition of paintings and photography, colourful and loosely figurative, with a nod to abstraction. Greetings by Mac and Tonka, the pugs and faux-kraut-rock musical noodlings by Ruler.

Visits outside of listed times are most welcome on request.



ORANGE HANDBAG AT DUSK
EMMA BROWNJOHN

The Tin Drum Seven Dials

95–97 Dyke Road
Brighton BN1 3JE

01273 777575
sevendials@tindrum.co.uk

Exciting and vibrant contemporary paintings and prints from established Brighton artists: Emma Brownjohn, Tiffany Lynch, Sophie Abbott, Shyama Ruffell, Edwina Roberts.

THE ROOM WITH NO DOOR JAKE SPICER



The Calico Gallery

Unit 7, Dyke Road
Mews, Seven Dials,
Brighton BN1 3JD

07805 201 057
calico.gallery@yahoo.co.uk

The Calico Gallery, supported by Fat Flyers, provides exhibition space for talented young artists that have not yet been recognised in the local community. This exhibition entitled **Living in the house with no door** is comprised of sensitive graphite studies and atmospheric oil paintings presented to give an underlying sense of narrative.

4 10/11 17/18 24/25 12–4pm

1st

May 3/4 10/11 17/18 24/25 11.30am–5.30pm

1st

May 3/4 10/11 17/18 24/25 11am–6pm

Avondale Open House

1 Avondale Road
(Montefiore Road entrance)
Brighton BN3 6ER

01273 740373
inquiries@grace-eyre.org

A collection of inspiring works featuring paintings, textiles, mosaics, photographs, sculpture and ceramics. Art & Craft Workshops each weekend 1–3pm



RED BRONZE MARK JOHNSON

SlipstreamArt

12 Terminus Street
Brighton BN1 3PE

07966 216 766
markymarkjohnson@aol.com
slipstream.org.uk

Dramatic abstract images and themes, many of which are based on sounds, created in acrylic and various textures mainly on canvas. Plus guest artists.



GARETH CAMERON WATT

Eight O Nine

13 Chanctonbury Road
Brighton BN3 6EL

01273 727576
cameron@cameronwatt.co.uk

Selected works of Cameron Watt

Musical and Festival Events at Saint Nicholas

Sundays 11 and 18 May 2.30-4pm

Talks and walks around and about the ancient church and churchyard with experienced local church guide Robert Minton.



Friday 16 May 7.45pm

Hilser Flute & Harp Duo Candlelit flute and harp recital. Rachel Smith and Jean Kelly play sumptuous French music in Brighton's

oldest church with Debussy, Ravel, Fauré, Saint-Saëns, Damase, Françaix, Gaubert, Jolivet & Naderman £10 (£8)

Saturday 17 May 8pm

Ellie Blackshaw Violin/Viola
David Jenner Guitar

Ellie and David present an atmospheric and expressive combination of two stringed instruments with an exciting and varied programme: includes works by Bach, Schubert, Bartok, Falla and Debussy

£7.50 (£5)

Saturday 17 May 5.30pm

Beckenham Junior Choir and Youth Voices in Concert with Luke Baxter (violin) Free

Friday 23 May 7.30pm

Paul Gregory Popular Guitar Repertoire

Saturday 24 May 2pm

Amandla world music choir led by Mahasukha Uplifting, magical South African and songs from different traditions accompanied by Djembe drumming! Guaranteed to uplift your soul and get you dancing! £6 (£5)

Monday 26 May 7.30pm

Robert Chavner Countertenor
Helen Walker Soprano
Luke Nakajima Piano

Robert and Helen join with Luke Nakajima to bring an exciting programme of solos and duets by composers including Cavalli, Purcell, Handel, Mozart, Chopin, Schumann and Fauré. £8 (£5)



LUNCHTIME RECITALS

MUSIC AT THE HEART OF THE CITY

Wednesdays 12.30-1pm

Admission free!

Refreshments served, but bring your own sandwiches

March

19	Bernard Dombey	Violin
26	John Bruzon	Piano

April

2	Jacque Currie & Jonathan Steel	Soprano & Piano
9	Ben Solomon	Piano
16	Michele Scopes	Violin
23	Poetry with Music	
30	Piano Duo	

May The May recitals form part of the Brighton Festival – tickets in advance from The Dome Box Office 709709 or on the door **£2**

7	Joseph Spooner & Glen Capra (Rachmaninov, Arensky)	Cello and Piano
14	Pam Cragg and Margaret Grimsdell (Rachmaninov, Faure and Liszt)	Piano Duo
15	Clark University Sinfonia – Worcester Massachusetts, USA. Paul Sulsky, Director (Mozart, Pergolesi and Carr)	
21	Greg Moore	Tenor
28	Phillip Sear	Piano

To be considered for a lunchtime recital or evening concert in the beautiful ancient setting of St Nicholas' Church, contact **Julie Watson 07790 578251**

12

Holy Week and Easter 16-23 March

Activities and services at St Nicholas' remind us of all that happened during that first Holy Week.

Palm Sunday

10.30am We process from St Paul's School. The occasion recalls the triumphal entry of Jesus into Jerusalem and the story of that great day is retold during the service.

Monday

12 Noon Stations of the Cross

7.30pm The Eucharist

Tuesday

7.30pm The Eucharist followed by illustrated talk on 'The Passion in Art'. Explore the meaning of the passion story through 700 years of art from Giotto to the present. This talk and presentation, led by painter Matthew Burrows,



explores the challenges of imagining The Passion for artists and their audience.

ST NICHOLAS' news Fr Robert Chavner writes



This year parishes are invited to join a nationwide campaign to reach out to people in their communities. Research shows that lots of people are interested in our faith, and might well attend a special church service if someone invited them. May I take this opportunity to invite you personally to attend St Nicholas this Easter? I invite you to bring your own spiritual journey into this community, joining with many others on the way. Bring your gifts, your own religious tradition, your hopes, your doubts, and your questions. I look forward to welcoming you. A very Happy Easter to you all.

Wednesday

10.30am The Eucharist

7.30pm Passover Meal shared with friends within Brightelmstone Covenant at Brightelm; all age, community-building event. Tickets from St Nicholas Church.

Maundy Thursday

8pm Eucharist of the Lord's Supper and Watch until Midnight.

Good Friday

10am Short Family Service followed by our joining Churches Together in Central Brighton and Kemp Town Procession of Witness

Noon-3pm Celebration of the Lord's Passion. Preacher: The Reverend Canon



Derek Carpenter – Chaplain to the Bishop of Tonbridge.

Easter Day

5.30am Easter Celebration Vigil of readings, blessing of new fire, lighting of Paschal Candle, Holy Baptism, Confirmation and First Mass

of Easter. President: The Right Reverend David Willcox, Assistant Bishop in the Diocese. Please stay for breakfast, served



immediately after Mass.

10.30am Festival Eucharist with procession and Blessing of Easter Garden The church is decorated with flowers.



Christmas Concert and Party at St Nick's

On 4 December with the help of the Friends of St Nicholas, we held our second Christmas Concert and Party. Professional and local musicians treated over 100 of us to an hour of wonderful music and words: highlights included tenor **Greg Moore's** haunting rendition of *Stille Nacht*, **Jote Osahn** and **Mike Simmonds'** moving double violin Bach concerto, **Luke Nakajima's** extraordinarily dramatic Chopin *Scherzo* (piano), and accompanying throughout, **Margaret Sharman** with seasonal Betjeman, **Marion Huang** with *Not Joyce Grenfell*, and countertenor **Father Robert Chavner**, rounding off the

evening with Bach and more Christmas favourites. **Zita Latham** provided fabulous food and **Carolyn Sansbury** helped with the raffle. In addition twenty five generous traders provided excellent raffle prizes 'in kind' ranging from a stunning framed print of a watercolour of the West Pier by **The Framing Studio's Lesley Cochrane**, and an Open Kitchen morning to an oil change: **Agnews, Auto Top, Barry at the Tureen, Bert's Homewares, Billie's, Blenio, City Books, Estia, Finishing Touch, Flush, Lisa Dobinson, Sevendials Restaurant, Sixtyseven, Streamline, The**

Crescent, The Hair Emporium, The Princess Victoria, The Studio Shop, Three Angels, Threshers, Tingleys, Tutti Frutti, Video Paradiso, Waters.

Also several generous individuals gave personal prizes, including children's books illustrator **Chris Riddell**. Through everyone's efforts we raised an amazing £1000 which was divided between the Friends of St Nicholas (who passed it to the newly formed St Nicholas Church Green Spaces Association) and the Brighton Housing Trust (for use at their First Base Day Centre). Put this year's date – Tuesday 2 December – in your diary now!

>>> Traders news

Once again in 2007, the support from our local traders and advertisers has been outstanding: not only have they supported CMPCAnews with their advertising, but also the Clifton Montpelier Powis Festival and of course the raffle at the Christmas Concert and Party above. We are hugely grateful to them. Many of our traders are developing and expanding and we wish them every success and hope you will support them: Sherrill and Ruel Musa from the Filipino Market in Montpelier Place, opened their restaurant **Aristocrats**

Sizzling Bar and Restaurant at 54 Preston Street on 29 February serving mainly fish and seafood. Sam Metcalfe of **Sevendials Restaurant** has transformed 1 Paston Place in Kemptown into **Sam's of Brighton** as a family-friendly bistro-style restaurant. **Jo Weekes** from **Sixtyseven** is about to launch her own website. **Parker Bathrooms** have extended their product range to include fires, woodburning stoves and lights at **Magic Lighting Co and Firestores**, 80 Dyke Road. As the print **Lesley Cochrane** donated to our

Christmas raffle testifies, Lesley is an accomplished artist and welcomes commissions: contact her at the **Framing Studio** (731405) 30 Upper North Street. **The Crescent** has installed new chef Harvey and now offers a seasonal menu, currently homemade pies, burgers and casseroles with free glass of wine. We wish Nicki and Gill all the best as they move from the Princess Victoria to the **PV@the Jury's Out**, Edward St. **MamaOshun** is hosting lots of workshops at the moment – see their weekly flier.

sixtyseven

sixtyseven for

- gifts
- cards
- wrap
- toys
- lighting
- homewares

67 Dyke Road
(corner of Clifton Road)
Brighton
BN1 3JE
01273 735314

Tusia

Postgraduate Diploma in
Psychotherapeutic Counselling

BCP Accredited Counsellor –
Psychotherapist

01273 323142
tusiawerner@tiscali.co.uk

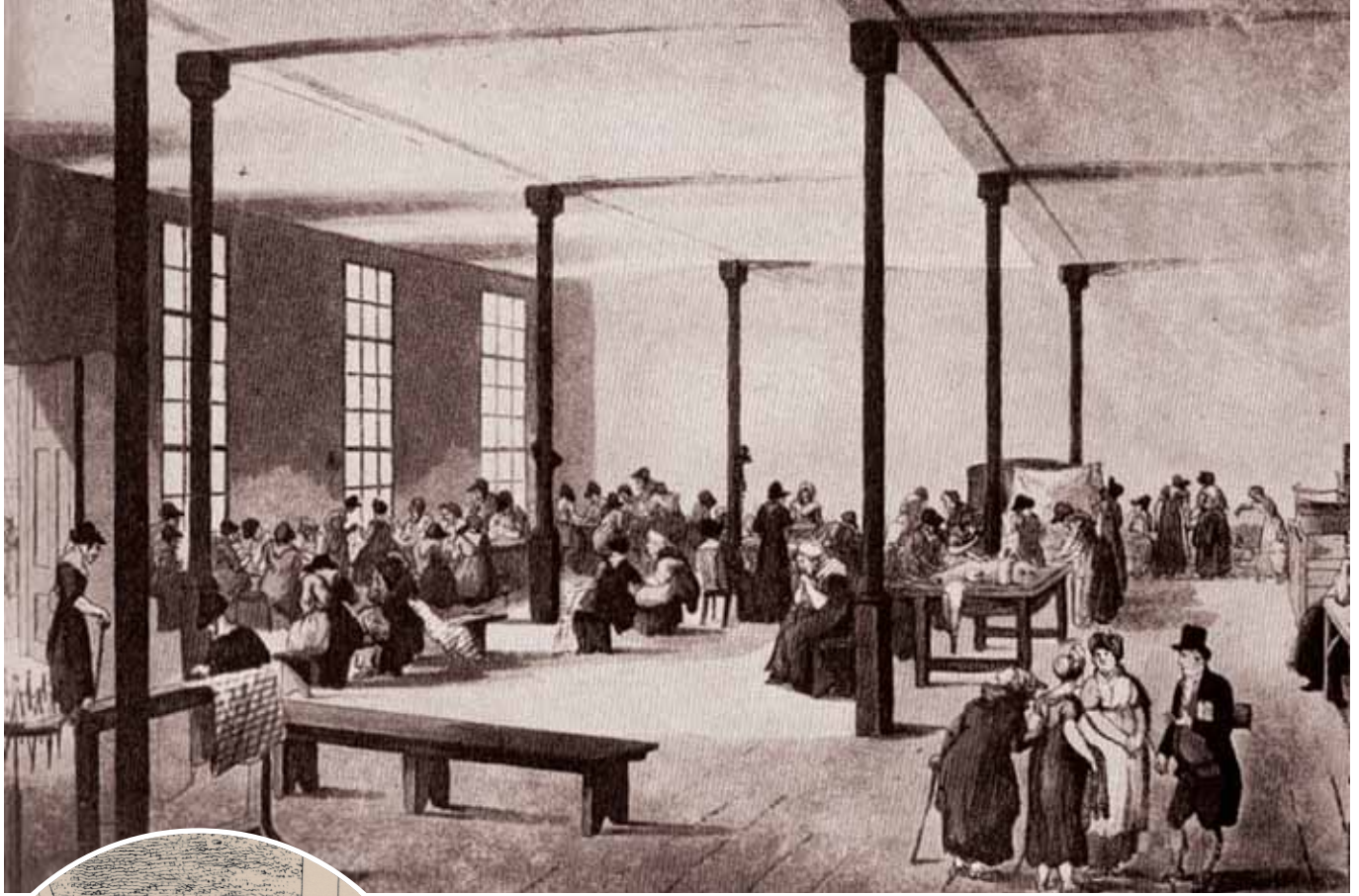
Werner

Counselling can help you develop coping strategies for difficult situations at home, at work and in your personal relationships

Couple and bereavement counselling

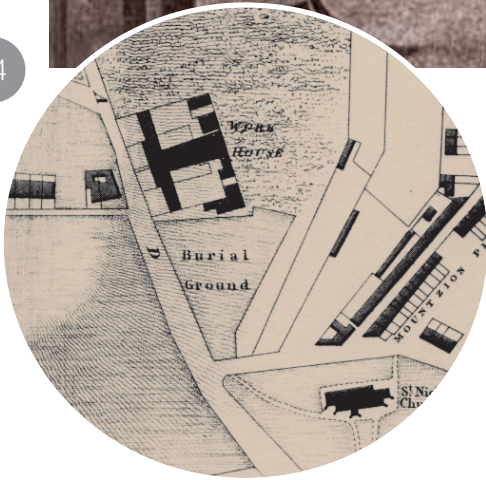
Being a parent is one of the most important challenges we face: support counselling for parents can increase your confidence and enable you to explore different strategies to deal with problems at home or at school

The Church Hill **Workhouse**



TYPICAL UNREFORMED WORKHOUSE 1834

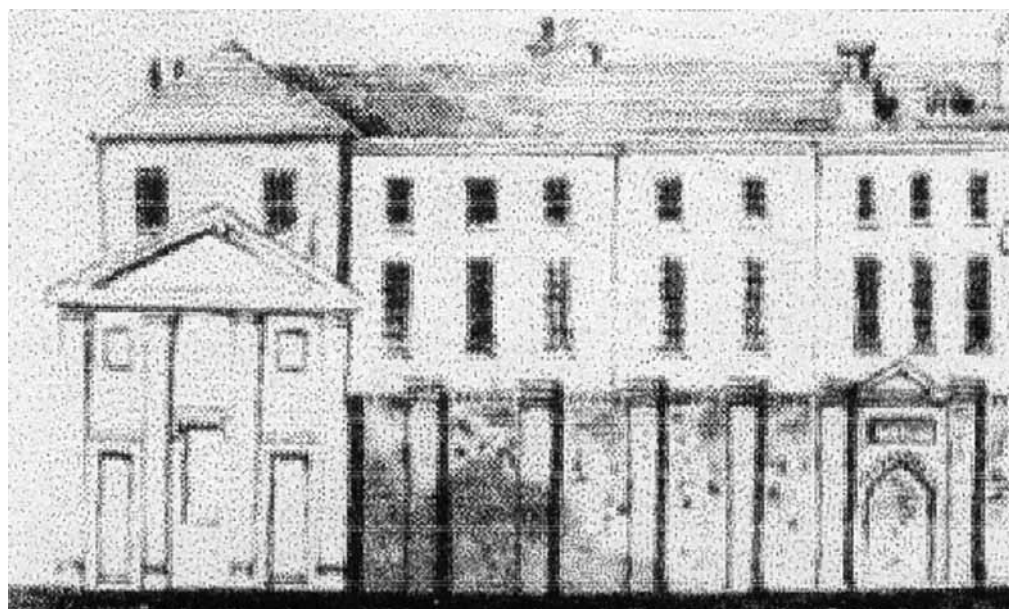
14



Further to Peter Tuckett's article in CMPCAnews 10, in the first of two articles, local historian and writer **James Gardner** gives us further insights into the life of the workhouse on Dyke Road

In late September 1821, 95 pauper inmates were reluctantly transferred from the old workhouse in Bartholomew Square to the new one in Church Hill in Dyke Road. Because of the swirling rain, those who were old, infirm or small children were conveyed in a covered van. So far up the hill and out of town was their new abode that some said it was like a 'howling wilderness, out of this world'. Apart from the inadequacies of the old workhouse, the Brighton Guardians of the Poor had decided to remove from the centre of the town what they considered to be an eyesore to their increasingly fashionable society visitors.

CHURCH HILL WORKHOUSE



The new workhouse, situated next to St Nicholas Church, was surrounded by fields with a soap factory and artillery range nearby. The building could accommodate up to 450 inmates and had an L shaped layout that divided the workhouse into sections in order to segregate its inmates on the basis of sex and their ability to work. The authorities described it as “fitted up with every convenience requisite to ensure the cleanliness and health and comfort of its inmates”. In the yards there were workshops and a corn mill for grinding flour. The whole building was surrounded by a high prison-like wall. Outside lay eight acres of gardens where vegetables could be grown and sold in the markets.

The regime at Church Hill was undoubtedly a harsh one, with inmates having to rise every morning at 5am from March to September and 7am in winter. And much of the work was hard and tedious and the diet, meagre of quantity and quality. The Poor Law Amendment Act of 1834 threatened to make conditions even harsher by insisting that outdoor relief should be phased out and that from now on, if an able-bodied man wanted relief, he would have to take himself and his family to the workhouse where he would be separated from them. Under the new guidelines, a man could be punished for talking to his wife.

Fortunately, many of the Brighton Guardians were against the Act and one was loudly cheered at a public meeting in 1836 when he said that “should misfortune bring him to the workhouse he would, if he had a pistol in his hand, blow out the brains of the first man who attempted to separate him from his

wife”. In the event, Brighton continued to provide discretionary outdoor relief for the rest of the century primarily because it was cheaper. The Guardians knew they could never have built a workhouse big enough to hold all those wanting relief.

Church Hill, like most workhouses of that time, was undoubtedly a theatre of misery with young pregnant women frequently abandoned at its doors and with an inordinately high death rate. However, the inmates were not all submissive and, from the local newspapers, another picture also emerges: that of constant battles – sometimes physical – between inmates and the staff, between the Governors and the Guardians and between the Guardians themselves.

If we take just one year, 1836, we can see that it was full of incidents. In January, in freezing temperatures, three inmates refused to work because the fire was not lit (after they had returned from work), and threatened the Governor. They were given 21 days in the House of Correction. In the same month, a workhouse girl was snatched by gypsies. In February, there were complaints that the bodies of paupers were being brought in a vegetable cart for interment. In March, there were rumours that some of the overseers had written to the Poor Law Board complaining about the workhouse diet. One of the Guardians, Mr Hewitt, responded by proclaiming that “they (the Guardians) could treat their paupers as they liked”. In April, a man was sentenced to 21 days on the treadmill for bringing his family into the workhouse, having dinner and then absconding. In May, one Guardian objected to the re-appointment

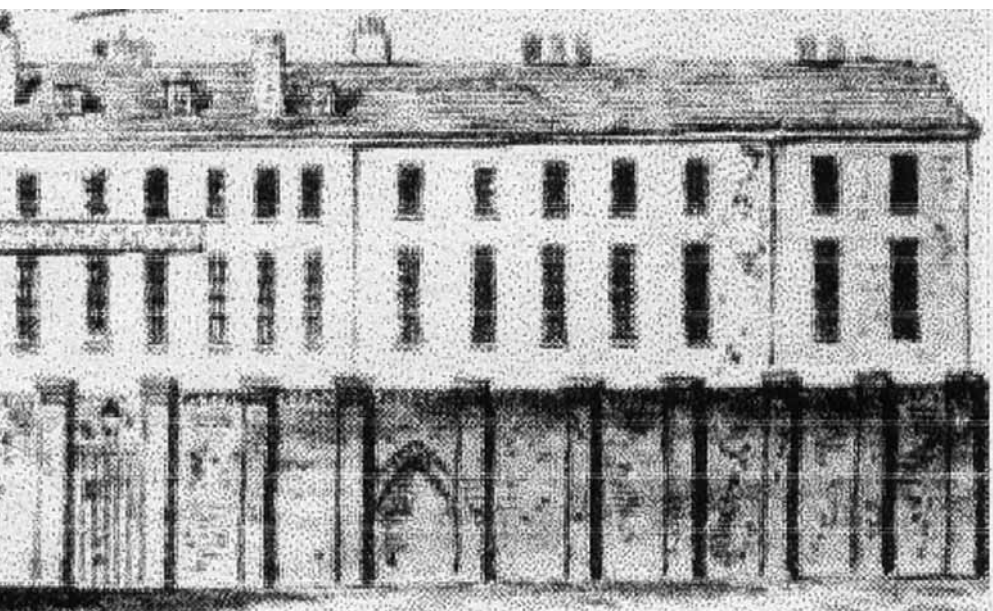
of the Governor and wanted a committee to enquire into his past conduct as he had heard “he had a very violent temper and was cruel to the inmates”. The Governor eventually resigned.

In June, several Guardians objected to the three hour long Sunday sermon claiming that “the inmates were called upon to attend more religious exercise than their understandings could bear” and one Guardian claimed that the sermons “tired him to death”. In November, an inmate, Robert Pentecost, refused to wear a pair of shoes made in the shoemaker’s shop. He went 60 hours without food as punishment, still refused and was given slippers to wear but wore them out. Whilst the Governor was absent, he laughed at the clergyman during prayers. Brought before the bench he told the magistrates that he had laughed because his stomach was empty: “I have a piece of beef as big as a walnut to do my work upon. I could eat a pound of beef (laughter)”. He was given 14 days’ hard labour. The month ended with the new Governor having a fight with a local tradesman who claimed he had been rude to him.

Finally, in December, a pauper woman, Mary Warmington, on relief in the community, claimed she was carrying the child of the assistant-overseer, Samuel Thorncroft. He had visited her at suspicious times of the night and had granted her a generous weekly allowance from Parish funds. Witnesses claim to have seen him reading a book to her, *The Means to Avoid Pregnancy*. When she told him she was expecting his child he threatened to have her money stopped. Thorncroft was eventually charged in court with failing to support a ‘female bastard child’ but was acquitted through lack of evidence.

But however harsh conditions were inside the workhouse, they were often worse outside. On 23 December 1840, the *Brighton Guardian* reported that “in the neighbourhood of Edward Street and Church Street hundreds and hundreds of poor children were actually famishing from cold and starvation, and were seen five and six together endeavouring to impart heat to each other upon a wretched parcel of straw in the corner of some miserable garret”.

In Part Two, I would like to look at the two inmate groups who caused the officials at the Church Hill Workhouse most concern: the children and the vagrants.



Treasurer's report for the year ended 31 December 2007

Statement of Financial Activities the Year Ended 31 December 2007

INCOME AND EXPENDITURE	2007	2006
	£	£
Incoming resources		
donations: (meeting collections)	129	77
Activities to generate funds:		
Advertising revenue for newsletter (incs prepayment for ads in future NLs)	7047	3769
revenue from soc events (Xmas concert/party)	1168	1392
revenue from CMPFestival 07	4924	
Investment income & interest:	0.00	0
Total Incoming Resources	13268	5238
Resources expended		
Newsletter (printing and production)	5546	5250
Community meetings	170	210
Social Events (inc Xmas concert/party)	255	407
CMPFestival07	3657	
Management / administration/insurance	552	51
Grants		
Community donations	0	30
Community Matters sub	0	21
Donations (Xmas concert/party)	1000	1000
Total resources expended	11180	6969
Net incoming (outgoing) resources	2089	-1731
Total funds at 1 January	751	2482
Total funds at 31 December	2834	751

Balance sheet at 31 December 2006

CURRENT ASSETS	2007	2006
	£	£
Cash at bank in hand	4332	3356
DEBTORS:		
Advertising revenue	619	97
CMPFestival 07 sponsors	200	
	5151	3453
CREDITORS:		
Xmas party expenses	-40	103
printing CMPCA news 10	-1277	-1600
donations Friends of St Nicholas and BHT (Xmas part)	-1000	-1000
	2834	751
NET ASSETS	2834	751
Unrestricted funds		
General funds	2834	751
Total funds	2834	751

Here are the accounts for our second full year. They will be presented for approval at our AGM on 22 April with the report from our independent examiner. Once again each edition of CMPCAnews has covered its costs. We are very grateful for the continuing support of our local advertisers. The first summer festival also proved successful in financial as well as artistic terms, and is responsible for much of the increase in our overall income and expenditure during the year. As in 2006 the Christmas event enabled us to make substantial donations to two local charities, the Friends of St Nicholas, and Brighton Housing Trust for their First Base appeal. **Peter Freeman**



Tutti Frutti

Delicatessen, Espresso Bar and Freshly Cooked Food – Eat In and Take Away

- All day breakfast menu available including full English breakfast, eggs benedict and croque monsieur
- Large range of freshly home cooked dishes to eat in or take away
- Sandwiches made to order
- Delicious Italian coffee, patisserie and pastries
- Wide selection of charcuterie, cheese, antipasti and delicatessen treats
- Specialists in all types of outside catering

Opening Times Sunday and Monday 09.30–15.00, Tuesday to Saturday 09.30–18.00
92 Dyke Road, Brighton BN1 3JD 01273 326147

Building Insurance

- Specialist schemes available for converted or purpose built flats
- Freeholders
- Freeholders management companies
- All risks cover at very competitive premiums

Please ring for a quote

Michael Paul Insurance Services
85 Dyke Road Brighton
01273 328738

Authorised and regulated by the Financial Services Authority

Management Committee's Report 2007/2008

ORIGINS and STRUCTURE

The Clifton Montpelier Powis Community Alliance was founded in 2005 as a not-for-profit community association to foster a sense of community and help residents come together to discuss and take action on issues of concern in the area. The honorary officers and Management Committee members elected at the 2007 AGM are listed on p19.

MEETINGS and ISSUES

The Management Committee meets monthly. In the last 12 months we have held **six community meetings** (including the AGM) with invited speakers, the **Christmas Concert and party** and the **Clifton Montpelier Powis Festival (13–22 July)**. Surgeries to consult the neighbourhood police team take place before our community meetings.

At our **second AGM in April**, **Matthew Andrews** and **Max Crisfield** gave an illustrated talk on their book *Brighton and Hove*. At our **June** meeting, **Clearing up after us and keeping the peace**, **Tim Moore** told us of Cityclean's waste management plans and **PC James Marter** explained the significance and impact of the new licensing act. In **September** we looked at the impact of the **parking changes** and the plans for the **Royal Alex site** (see below). In **November**, **City Centre Management and the impact on residents of commercial life** was our focus. This included the background to police proposals for a '**cumulative impact zone**' and the council's strategy (described by **Rob Fraser, Head of Planning Strategy** and **Roger Dowty, Head of Design and Conservation**), of 'improving our public realm' by giving more weight to residential amenity and character in planning decisions. In **January**, **Streets for People**, **B&HCC Transport Planner**, **Walking and Cycling Abby Hone** showed slides of the key features of Copenhagen's balanced approach to cars, cycling and walking taken during her internship there and in **March**, **Chris Callard** of **Transition** will talk to us about its aims for a carbon-neutral city.

The redevelopment of the former **Royal Alexandra Hospital sites** continues to cause concern: 3rd Avenue Ltd's second re-submission for five townhouses on the car-park site is still

with planning officials. Working in concert with other local community associations we have tried to engage with the developers of the main site, Taylor Wimpey, whose re-submission is currently with officials. In August, we alerted members by email to their first planning applications and the CMPCA chair submitted a reasoned objection to them. The CMPCA has also objected to the current application, arguing for the potential of a hybrid scheme suggested by MC member Graham Towers to retain and convert the South Eastern corner of the old building. We also objected to the height and proximity of buildings adjoining residents' homes in Homelees House, Clifton Road and Clifton Hill. The inclusion of a surgery to replace the one in Victoria Road that will close down remains a key concern. We have also made our views known on other contentious planning applications, including a successful objection to the **Mitre House** proposal because of its impact on townscape views and the overshadowing of neighbouring streets.

Following the introduction of the **new parking zones** last spring, Management Committee asked **John Riddington**, Clifton Place Street Rep and MC member, to collate residents' views (through surveys conducted by Street Reps) on the parking changes. On finding a marked deterioration in zone Z parking after 6pm, meetings and a walk round the CMPCA's zone Z streets with council officials successfully identified several locations where post 6pm parking was possible and is being implemented. The results of a survey about moving the Y/Z boundary south to Western Road were less clear-cut.

COMMUNITY LINKS

From **13–22 July**, the CMPCA celebrated the area's cultural and literary heritage (and its gardens) with the first **Clifton Montpelier Powis Festival** with more than 20 literary and musical events at **S Michael's and St Nicholas' churches** and six brave residents opened their gardens for The Beacon's Garden Gadabout in the **Clifton Montpelier Powis Trail**. In **December** we held our second Christmas Concert and Party at St Nicholas' with local musicians – including the vicar – entertaining over 100 of us. Local traders providing raffle prizes helped us raise £1000 for Brighton Housing Trust and the Friends of St Nicholas (who helped run the event and with wonderful

food once again by **Zita Latham**). The Friends passed their share of the money (for restoration of historic monuments and tombs) to the newly formed **St Nicholas Church Green Spaces Association** (SNCGSA) which was officially inaugurated in October by a group of residents keen to protect, maintain and enhance the three open spaces adjacent to St Nicholas as places of recreation and enjoyment for all sections of the local community. Just before Christmas we successfully applied for Community Chest funding and received £500 for community Noticeboards to be strategically placed throughout the area. The expanding support of residents, traders and advertisers for our activities is invaluable. Special thanks to our volunteer Street Reps who deliver our quarterly newsletter and liaise between residents in their street and the Committee.

The CMPCA belongs to the Brighton and Hove Community and Voluntary Sector Forum. We have benefited from the active support of **Cllrs Roy Pennington** and (since May), **Sven Rufus**, and of **Fr Robert Chavner of St Nicholas** and **Fr Robert Fayers of S Michael's** and **All Angels** especially as our CMP Festival partners. We continue to hold our community meetings at St Mary Magdalen's Community Centre.

CMPCAnews and COMMUNICATION

Four quarterly issues of **CMPCAnews** have been produced by the **Newsteam** (Philippa Sankey, Corinne Attwood and Teresa Dearlove (Design)). Contributions from residents have increased, particularly with family and local history articles, and the newsletter currently includes a free listings page for local events. The newsletter continues to attract advertising from our supportive local traders. We also keep in touch by phone, email and website www.cmpca.org.uk (Tony Davenport and Corinne Attwood).

AGM 22 April 2008

The following nominations have been received for Honorary Officers: Adam Jones (Chair), John Riddington (Vice-Chair), Philippa Sankey (Secretary), Peter Freeman (Treasurer); and for Management Committee: Corinne Attwood, Judy Bow, Roz Charters, Tony Davenport, Jane Gray, Michael Hales, Aidan Lunn, Pauline Messum, Graham Towers and Nick von Tunzelmann.

>>>Events

MARCH

Saturday 15

7.30pm The Brighton Orpheus Choir's 60th Anniversary concert with Sinfonia of Arun and vocal soloists conducted by Stella Hull; programme includes Elgar's The Music Makers and Mendelssohn's Hymn of Praise. All Saint's Church, The Drive. Tickets 552670 or www.brightonorpheus.org

7.30pm Sussex Musicians Club includes vocal ensemble (Prayers from the Ark) Bach, Copland, Debussy piano solos, Elgar songs, Hindemith Viola Sonata. St Peter's Church Hall York Place. Tickets £3 on the door

Sunday 16

11am 9th Celebrity Series Sunday Coffee Concerts Chillingirian Quartet The Old Market, Upper Market Street Box Office 736222

Wednesday 19

12.30pm lunchtime recital Bernard Dombey (Violin) St Nicholas Church

Thursday 20

6.30pm City Books at The Old Market Louis de Bernieres A Partisan's Daughter Tickets £6 (inc glass of wine) from City Books 23 Western Road 725306

Good Friday 21

Regency Society trip to Chichester: visit Pallant House Gallery and The Hanover Band's St John Passion Chichester Cathedral. Tickets & info 674692

Wednesday 26

12.30pm lunchtime recital John Bruzon (Piano) St Nicholas Church

Saturday 29

10.30am Cricket event with former Sussex players John Barclay, Jim Parks, Ian Thomson, John Spencer, Richard Montgomerie and John Snow. St Nicholas Church. Tickets £12 (incs coffee, lunch and glass wine) Friends of St Nicholas (775393)

Monday 31

8pm Lewes Monday Literary Club. Dame Stella Rimington on espionage in fact and fiction. Pelham House Hotel Lewes. Tickets: members free non-members £5 at the door

APRIL 2008

Wednesday 2

12 30pm lunchtime recital Jacquie Currie & Jonathan Steel (Soprano & Piano) St Nicholas Church

Friday 4

6.30pm City Books at The Old Market Dave Gorman America Unchained Tickets £6 (inc glass of wine) from City Books 23 Western Road 725306

Saturday 5

7.30pm Sussex Musicians Club Piano solos, Spanish songs, Schumann Adagio & Allegro for cor anglais and piano, Schoenberg Five Piano Pieces Op 23. St Peter's Church Hall York Place. Tickets £3 on the door

Wednesday 9

12 30pm lunchtime recital Ben Solomon (Piano) St Nicholas Church

Wednesday 9 – Saturday 12



7.45pm Wick Theatre Company's Diamond Anniversary season gets off to a steamy start with one of the first non-professional productions of The Graduate: Terry Johnson's notorious stage adaptation of the popular Oscar-winning film from the swinging 60s. Barn Theatre, Southwick. Tickets: £8.50 Box Office 597094 or www.wicktheatre.co.uk.

Wednesday 16

12 30pm lunchtime recital Michele Scopes (Violin) St Nicholas Church

Wednesday 23

12 30pm lunchtime recital Poetry with Music St Nicholas Church

6.30pm City Books at The Old Market Jodi Picoult Change of Heart Tickets £6 (inc glass of wine) from City Books 23 Western Road 725306

Thursday 24

6.30pm City Books at The Old Market Will Self The Butt Tickets £6 (inc glass of wine) from City Books 23 Western Road 725306

Friday 25

1pm City Books at The Old Market Simon Callow continues his biography of Orson Wells Tickets £6 (inc glass of wine) from City Books 23 Western Road 725306

Saturday 26

7.30pm Sussex Musicians Club French Cabaret songs, piano solos, oboe solos, Mozart Piano Quartet No 2 in E flat K493. St Peter's Church Hall York Place. Tickets £3 on the door

Monday 28

8pm Lewes Monday Literary Club. William Nicholson, writer of novels, plays and film scripts: 'Film or Novel?' Pelham House Hotel Lewes. Tickets: members free non-members £5 at the door

Wednesday 30

12 30pm lunchtime recital Piano Duo St Nicholas Church

MAY

see centre pullout for Festival Events

Saturday 24

10am–5pm St Ann's Wells' Gardens centenary celebrations (see page ?)

7.30pm Sussex Musicians Club. Short concert followed by AGM. St Peter's Church Hall York Place. Tickets £3 on the door

Sunday 25

12.30pm Powis Square Community Association barbecue

2pm annual bric-a-brac and book sale in Powis Square (see page ??)

JUNE

Saturday 14

7.30pm East Sussex Bach Choir: GF Handel Acis and Galatea Lewes Town Hall. Tickets www.bachchoir.org.uk, Lewes Tourist Information Office, 07759 878562, or at the door.

Advertise in our Summer issue!

cmpca **new** is distributed free to 2,500 households and businesses in the CMPCA area quarterly

For rates e advertising@cmpca.org.uk
t 07816 403099

or write to cmpca **new**, 21 Clifton Hill BN1 3HQ

Deadline 18 April 2008 for cmpca **new**, 12 (June 2008)

New free listings page for events in and around our area and beyond (or pay to advertise)
e details of events for June–September by 18 April 2008



109/110 Western Road, Brighton BN1 2AA

Thinking of selling or letting your property?

Tel. 01273 747473

e-mail: info@masseyproperty.com



The **CMPCA's** purpose, as stated in our constitution is to 'promote the benefit of the inhabitants . . . without distinction of sex or political, religious or other opinions by associating the local authorities, voluntary organisations and inhabitants in a common effort to advance education and to improve the physical and economic conditions of life . . . and to provide facilities in the interests of social welfare for recreation and leisure time occupation with the object of improving the conditions of life for the said inhabitants.'

Officers
 Chairperson
Adam Jones
 Vice-Chair
Ann Smith
 Treasurer
Peter Freeman
 Secretary
Philippa Sankey

Management Committee also includes Officers
Corinne Attwood
Judy Bow
Roz Charters
Tony Davenport
Jane Gray
Aidan Lunn
John Riddington
Graham Towers
Nick von Tunzelmann

Newsletter and advertising
Philippa Sankey and Corinne Attwood
 e newsteam@cmpca.org.uk
 e advertising@cmpca.org.uk
 t **07816 403099**
21 Clifton Hill BN1 3HQ
www.cmpca.org.uk

Design **Teresa Dearlove**
 e t.dearlove@dsl.pipex.com
 Print **one digital**

The views expressed in *cmpcanews* are those of contributors and do not necessarily reflect the official view of the CMPCA

Street Reps

Would you like to be a street rep? There are still some vacancies! For those whose details do not appear below please e info@cmpca.org.uk or t **07816 403099** and we will put you in touch or try www.cmpca.org.uk

Borough Street	Feroz Jafferji 728996 fjafferji@yahoo.com
Church Street (Upper)	Shaun Kiddell
Clifton Hill	Carole Moorhouse 202418 carolemoorhouse@btinternet.com
Clifton Place	John & Jenny Riddington 771431 john.riddington@tiscali.co.uk
Clifton Road	Pauline Messum
Clifton Road (Homelees)	Michael Hales
Clifton Terrace	Morham White morham@aol.com
Crown Gardens	Shaun Kiddell
Crown Street	
Dean Street	Paul Schofield p-schofield@hotmail.co.uk
Dyke Road (west side)	Bernard Howells
Denmark Terrace	Sadie Cook sadiecook@hotmail.co.uk
Hampton Place/Street	Arnold Rose kemptownterracotta@gmail.com
Hampton Terrace	Richard Brown
Marlbrough St/Mews	Sue Paskins 329934 paskins@brighton.fsbmail.co.uk
Montpelier Crescent	Peter Freeman
Montpelier Road	
Montpelier Road (Park Royal)	Jill Langridge
Montpelier Street	Bernard Dutton-Briant
Montpelier Place	John Warmington

Montpelier Terrace	Jane Gray 328179 finegray@aol.com
Montpelier Villas	
Norfolk Road	John Bristow
Norfolk Terrace	Susan Smith
Powis Grove	Steve Crockett steve_crockett@hotmail.com
Powis Square	Ann Smith 0780 1689937
Powis Road	Brian Izzard
Powis Villas	Roger Wardle
Regent Hill	Bob Higham robert.higham@btinternet.com
St Michael's Place	Liz Stewart & Roz Charters
Spring Street	Adrian Kenward 739441
Temple Gardens	Julie Rignell
Temple Gdns (York Mansions)	Simon-Pierre Hedger-Cooper 07941 327712
Temple Street	Aidan Lunn
Upper North Street	Richard Brown jac.brown@ntlworld.com
Vernon Terrace	Tony Davenport
Victoria Place/Street	Peter Woodhead pwoodhead@waitrose.com
Victoria Road	Nick von Tunzelmann & Carol Dyhouse
Vine Place	Dan Andrew & Malene Kastor danandrew46@mac.com
Wykeham Terrace	Michael Fisher
Non-resident in street	

19

>>>> Summary records of **CMPCA meetings**

Full minutes available by email from Secretary at info@cmpca.org.uk and at cmpca.org.uk

20 November 2007

City Centre management and the impact on residents of commercial life

PC James Marter confirmed area crime down 7.8%, burglary up 12.2%; introduced 'cumulative impact zone': burden of proof on licensee to prove eg extra noise won't occur. Rob Fraser, Head of Planning Strategy and Roger Dowty, Head of Design and Conservation Team, talked about preserving character and appearance and judging developments against amenity and area's general character.

RAH update: Roger Dowty reported Taylor Wimpey application withdrawn and told case for demolition inadequate: re-submission to include economic assessment of conversion but RD felt main building would not convert easily. Graham Towers felt it could. Carpark site expected to go to planning committee within month.

MC Update: Parking John Riddington reported on successful regaining of Z Zone

spaces and survey re moving boundary to Western Road. **Communal bins** rollout across central Brighton: Chair to request FULL consultation with residents. **Treasurer's report** Newsletter generates modest surplus. **AOB** Graham Allen, community worker supporting neighbourhood renewal work in Brunswick and Regency area, encouraged small grant applications for £200-£500.

31 attended

15 January 2008

Streets for People: Abby Hone (B&HCC Transport Planner, Walking and Cycling) showed slides of Copenhagen's balanced approach to cars, cycling and walking taken during internship.

RAH update: New design submitted very similar to old: CMPCA maintained objections to first, seeking reduction of Block G from 5 storeys to 3, challenging dominating stair-tower, and proposing hybrid scheme retaining

SE corner of old building (for surgery) allowing 120-130 flats. Steering Group to meet TW on 1 Feb - application should go to Plan Cttee in March. Carpark site application still not submitted.

MC update: Christmas Party raised nearly £1000 for charity. Communal bins consultation documents to be sent to residents 25 Jan to return by 25 Feb - report to Env Cttee by 20 March. Cityclean do not favour retaining black sack collection service, but group of streets might be able to retain. **Parking** John Riddington reported residents' views sought re reversing remaining double yellow line decision.

Treasurer's report PF confirmed £1000 from Christmas Party to be divided between Friends of St Nicholas (who proposed to pass it to SNCGSA) and BHT for First Base.

AOB Sven reported committee system could be replaced by cabinet system in May.

31 attended

The Crescent open all day **fabulous new menu served**
12-3pm and 5.30-9pm **Sunday Roast large beer garden**



blenio bistro
DYKE RD, BRIGHTON

Come to enjoy modern European food
with a French slant
Open 10am till 11pm for breakfast, lunch & dinner
Closed all day Monday & Tuesday
Dine by candlelight & take in the welcoming,
warm & relaxed ambience.
Our serene and spacious garden is ready when you are!
We are fully licensed & stocked with cold beer,
cider & a cache of great wines.



blenio bistro.com
87-93 DYKE ROAD, SEVEN DIALS, BRIGHTON Tel: 01273 220 220

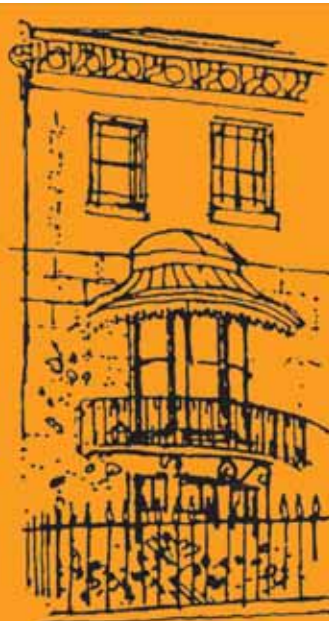
Uden
sales . lettings . management

for a friendly and professional service

local knowledge
sales lets

01273 721721

88 Dyke Road, Seven Dials
Brighton BN1 3JD
property@udenstateagents.co.uk
www.udenstateagents.com



Shepherds

Housepainters of distinction

Family business working
in the area for 35 years
Conservation and listed
property specialists

t 01273 842284
or 702655



BRIGHTON
DENTAL
CENTRE

69 / 75 DYKE RD
SEVEN DIALS SOUTH
BRIGHTON BN1 3JE

01273 220965

info@brightondental.co.uk
www.brightondental.co.uk

Our Dental Implant Team

provide the permanent fixed replacement
of missing single or multiple teeth, and
Implants for the retention of dentures.

The ultimate solution.

Please call for a consultation

Or visit www.brightondental.co.uk for more info



invisalign

invisible braces
certified provider

- Cosmetic Dentistry
- Dental Implants
- Whitening
- Lumineers®
- Wrinkle Treatments
- General Dental Care

